



## Warning!

- Indoor use only! Not for barns, stables and similar.
- Not for locations with moist or condensation.
- Not for locations with flammable vapour or dust.
- Not to be used by persons with reduced capabilities.
- Not to be used by or accessed by children, nor pets.



## Multi X™ Electronic Mouse Trap

## Attention

1. The bait should only be placed in the Bait Box and outside the trap entrance (stairs).
2. Do not use an excessive amount of bait, avoid any bait on the electrode plates and preferably use a bait of sticky texture.
3. Turn off the trap and disconnect it from the power supply before handling it. E.g. when moving or cleaning the trap.
4. Use gloves when handling the trap, i.e. when disposing of the catch. Wearing gloves is a hygienic measure, as well as, it ensures that human scent is not left on the trap which may otherwise deter mice.
5. If the trap is not in use for a long time: remove batteries or disconnect the power cord.
6. Always check that the trap is in Armed mode when in operation and then check it regularly.



## How to use

**Start:** Detach the base of the trap by sliding the top part towards the side where the "ON/OFF" button is located. Lift the top straight up when unlocked. Do the opposite steps to attach the top and bottom of the trap. Make sure the parts are locked in position and fully aligned.

**Power:** Insert 4x C (LR14) batteries into the Battery Compartment or connect the power cord (not included as standard) into the DC Power Input. Note: both power sources cannot be used at the same time.

**Bait:** Slide out the Bait Box and apply a small amount of sticky bait.

**Position:** Place the trap alongside a wall on a flat surface, in a dry and well-ventilated space.

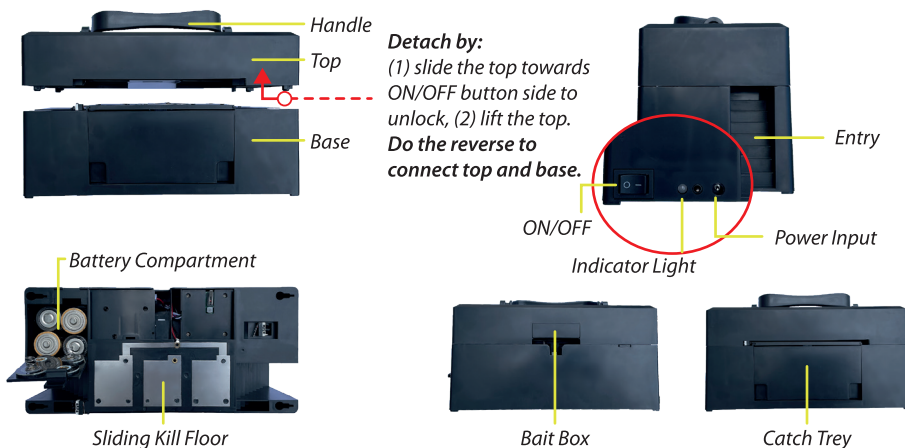
**Activate:** Set the switch to "ON". Indicator lights show if the trap starts successfully and is in Armed standby mode (see Indicator lights).

**Catch:** The trap releases a series of high voltage shocks during 25 seconds, instantly killing the mouse. Thereafter the floor slides open, releasing the mouse into the Catch Tray.

**Empty:** When the Catch Tray is full (up to 10 mice) this is shown by the indicator lights (see Indicator lights). When the trap is full it deactivates. Empty the tray and dispose of the catch. Always clean the trap after it has been emptied to avoid it malfunctioning.

**Clean:** Turn the trap "OFF" before cleaning. Clean the trap with a damp cloth. The top part of the trap can be rinsed with water if necessary. The bottom part (housing the batteries and electronic components) should NOT be exposed to water. Make sure the trap is fully dry before it is activated after cleaning.

## Components & functions



## Indicator lights & signals

- **POWER ON:** Solid green light and sound signal 2 "beep". After successful start sequence the trap will enter Armed mode.
- ● **ARMED:** Red light blinks every two seconds.
- ▬ **KILL:** Solid red light followed by sound signal 2 "beep".
- ● **BATTERY LOW:** Green light every two seconds.
- ● **PROBLEM/FULL:** Sound signal 4 "beep" followed by alternating red and green lights.